

SPEKTRA

APRIL 2024

AFRICA'S NO. 1 DESIGN & BUILD MONTHLY NEWSLETTER

IN THIS ISSUE

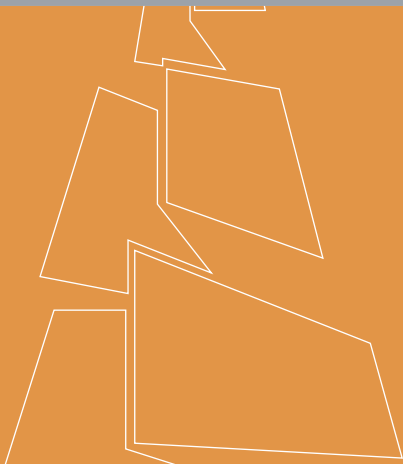
Welcome Message by
William Evans Halm

GUNG-HO!!!! Strengthening Bonds:
A Recap of Spektra Global's Happy
Hour Event

Project Showcase - Nyaho Primary
Care Center: A Testament to
Architectural Brilliance

Building Your Home the Spektra
Way: A 360° Design and Build
Experience

Frequently Asked Questions - Does
Spektra Global offer interior design
services in addition to architectural
design?



NYAHO
MEDICAL CENTRE

visit www.spektra.global

Table of Content:

Welcome Message : William Evans Halm	01
GUNG-HO!!!!: Strengthening Bonds: A Recap of Spektra Global's Happy Hour Event	02
Project Showcase - Nyaho Primary Care Center: A Testament to Architectural Brilliance	05
Building Your Home the Spektra Way: A 360° Design and Build Experience	07
Expert Insight: Q & A Section: Work place design and productivity	09
Frequently Asked Questions Does Spektra Global offer interior design services in addition to architectural design?	11
Kwame The House Hunter's Dilemma: Unravelling The Secrets Of The Past	12
Final Thoughts: Message from Karen Halm	15



William E.
Halm

WELCOME MESSAGE

As April draws to a close at Spektra Global, I want to extend my heartfelt appreciation to our dedicated team and valued clients. Throughout this month, we've embraced the spirit of teamwork and collaboration, recognizing the immense benefits it brings to our clients.

At Spektra, we believe that success is a collective effort. By working together seamlessly, we've been able to achieve remarkable outcomes, exceed expectations, and deliver projects that inspire and innovate.

I am truly grateful for the dedication and hard work of each member of our team. Your commitment to excellence and your collaborative spirit have been instrumental in our shared success.

To our clients, thank you for entrusting us with

your projects and for allowing us the opportunity to demonstrate the power of teamwork. Your partnership fuels our passion for what we do, and we are honored to be part of your journey towards realizing your vision.

As we reflect on the achievements of this month, let us carry forward the lessons learned and the camaraderie shared into the months ahead. Together, we will continue to push boundaries, drive innovation, and create spaces that inspire and uplift.

Here's to a future filled with even greater collaboration, success, and prosperity.

Warm regards,
William Halm
CEO/Principal Architect
Spektra Global

GUNG-HO!!!!

Strengthening Bonds: A Recap of Spektra Global's Happy Hour Event

In the fast-paced world of architecture and design, where deadlines loom large and projects demand our utmost attention, it's essential to take a moment to pause, connect, and celebrate the bonds that unite us as a team. That's precisely what we did at Spektra Global during our recent happy hour event, and what a fantastic experience it was!

The event was more than just an opportunity to unwind and socialize; it was a testament to our commitment to fostering a vibrant and supportive workplace culture. It was a sight to behold to see our team coming together, forging connections, and strengthening our collective spirit.



GUNG-HO!!!!

From engaging conversations to laughter-filled moments, the happy hour was a celebration of our team's diversity, creativity, and camaraderie. It was inspiring to witness colleagues from different departments and backgrounds coming together, sharing stories, and building connections beyond the confines of the office.

One of the highlights of the evening was the pottery workshop, where our team had the chance to unleash their creativity and learn something new together. It was a reminder of the importance of stepping out of our comfort zones, embracing new experiences, and supporting each other in our personal and professional growth journeys.

At Spektra Global, we understand that our success as a company is intrinsically linked to the well-being and happiness of our team members. That's why events like the happy hour are not just recreational; they are integral to nurturing a positive work environment where everyone feels valued, respected, and supported.





As we look back on the success of our happy hour event, let us carry forward the spirit of camaraderie and collaboration in all that we do. Let us continue to prioritize teamwork, communication, and mutual support, knowing that together, we can achieve remarkable results and overcome any challenge that comes our way.

Thank you to everyone who contributed to making our happy hour event a resounding success. Your enthusiasm, energy, and

participation are what make Spektra Global such a special place to work.

Here's to many more moments of connection, celebration, and shared success at Spektra Global!



PROJECT OF THE MONTH



Nyaho Primary Care Center: A Testament to Architectural Brilliance

We are thrilled to spotlight Nyaho Primary Care Center in Takoradi, a project that exemplifies Spektra Global's commitment to architectural excellence and innovative design.

Striking Facade and Thoughtful Interior Design:

Nyaho Primary Care Center captivates with its striking facade and thoughtfully designed interior spaces, creating an inviting atmosphere for patients and staff alike.

Precision Engineering and Creative Vision:

Designed and built by Spektra Global, Nyaho Primary Care Center reflects the company's unwavering dedication to quality and innovation, with attention to detail and precision engineering evident throughout the project.

Openness and Tranquility:

Step inside Nyaho Primary Care Center and experience a sense of openness and tranquility, thanks to its spacious interiors and abundant natural light, carefully curated to optimize flow and functionality.



Sustainability and Efficiency:

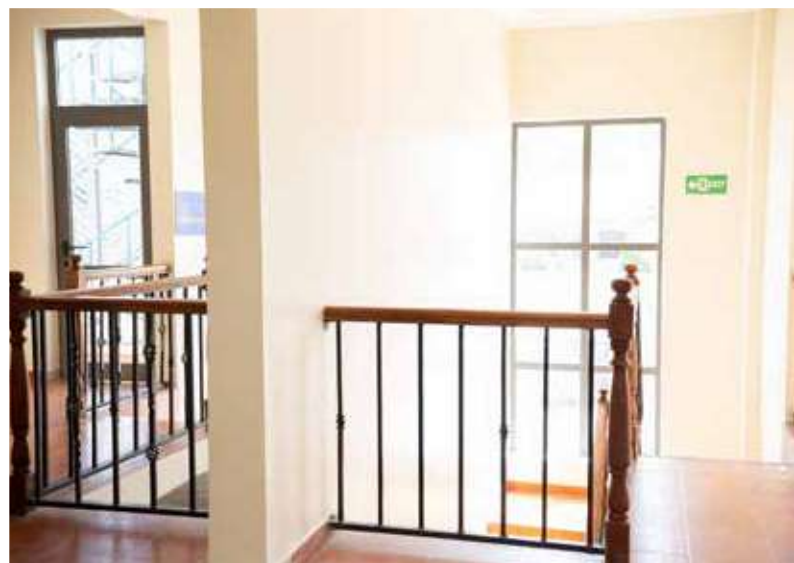
Nyaho Primary Care Center is designed for sustainability and efficiency, incorporating energy-efficient lighting, eco-friendly materials, and sustainable practices, reflecting Spektra Global's commitment to environmental responsibility.

Inspiration and Enrichment:

At its core, Nyaho Primary Care Center embodies Spektra Global's ethos of creating spaces that inspire and enrich the lives of those who inhabit them, serving as a shining example of architectural brilliance and transformative design.









A 360° Design and Build Experience

Welcome to April's edition of "Building Your Home the Spektra Way," where we take pride in showcasing our holistic approach to design and construction.

360° Design and Build Firm:

At Spektra Global, we go beyond conventional architectural services to offer a comprehensive 360° design and build experience. From initial concept development to final construction and beyond, we are your trusted partner every step of the way.

Integrated Design Solutions:

Our team of talented architects, engineers, and designers collaborate seamlessly to deliver integrated design solutions that exceed expectations. By combining creativity with technical expertise, we bring your vision to life with precision and flair.

Streamlined Project Management:

With Spektra Global, you can expect streamlined project management from start to finish. Our dedicated project managers oversee every aspect of the construction process, ensuring efficiency, quality, and timely delivery.

Attention to Detail:

We understand that the devil is in the details, which is why we meticulously plan and execute every aspect of your project with the utmost care and attention. From material selection to finishing touches, no detail is overlooked in our pursuit of perfection.

Client-Centric Approach:

At the heart of our 360° design and build experience is our client-centric approach. We prioritize your needs, preferences, and budget constraints, tailoring our services to meet your unique requirements and exceed your expectations.

Join us on this journey of creativity, innovation, and excellence as we build your home the Spektra way.

Transform Your Vision into Reality:

Whether you're building your dream home, renovating your space, or embarking on a commercial project, Spektra Global is here to help you transform your vision into reality. With our 360° design and build expertise, the possibilities are endless.

Expert Insight:

Q & A Section



In today's rapidly evolving business landscape, organizations are increasingly recognizing the importance of workplace design in shaping employee behavior, fostering collaboration, and driving innovation.

From open-plan offices to creative hubs and collaborative zones, the physical environment plays a critical role in shaping organizational culture and performance. In this expert insight segment, we delve into the ways in which workplace design promotes collaboration, teamwork, and innovation within organizations.

Let's explore how thoughtful design choices can transform the workplace into a dynamic hub of creativity and productivity.

Expert Insight:

Q & A Section

Q

How can workplace design promote collaboration and teamwork among employees?

A

Workplace design plays a crucial role in fostering collaboration by providing open, flexible spaces that encourage spontaneous interactions and idea sharing. Design elements such as shared workstations, collaborative zones, and communal areas facilitate communication and teamwork, leading to increased productivity and innovation.

Q

How can organizations leverage workplace design to promote a culture of innovation?

A

Organizations can leverage workplace design to promote a culture of innovation by aligning physical environments with strategic objectives and values. By creating spaces that reflect the organization's brand identity and ethos, employees feel a sense of pride and ownership in their work environment, which can fuel creativity and innovation. Moreover, integrating technology, collaboration tools, and interactive elements into the workspace can facilitate communication, idea generation, and project collaboration, enabling teams to innovate more effectively.



Frequently Asked Questions

Q.
Does Spektra Global offer interior design services in addition to architectural design?

A.
Yes, Spektra Global provides comprehensive interior design services to complement our architectural offerings. Our interior design team collaborates closely with clients to create cohesive and functional interior spaces that reflect their unique aesthetic preferences, lifestyle needs, and brand identity.



Kwame's House Hunting Dilemma: Unravelling The Secrets Of The Past

In the wake of his unsettling encounter with the enigmatic house, Kwame finds himself drawn deeper into a web of mystery and intrigue. Armed with an old photograph discovered within its walls, he seeks answers from his father, hoping to unravel the secrets hidden within his family's past. As they delve into the faded memories captured in the image, Kwame's journey takes an unexpected turn, revealing a tale of untold secrets and long-forgotten tragedies that threaten to reshape his understanding of history—and his own destiny.

In the quiet confines of his family's living room, Kwame eagerly presented the aged photograph to his father, a glimmer of anticipation dancing in his eyes. His father, a repository of wisdom and stories, studied the picture intently before a knowing smile graced his lips.



"These are the faces of your ancestors, Kwame," he began, his voice a mixture of reverence and nostalgia. "Your great-grandfather and his comrades, captured in a moment frozen in time."

As Kwame leaned in closer, his father's voice took on a storyteller's cadence, transporting them both to a bygone era. "It was the day after Ghana's declaration of independence," he continued, his words weaving a tapestry of history and intrigue. "A day of jubilation and unity, as the nation stepped into a new dawn of freedom."

But with each passing moment, Kwame's father's tale took a darker turn, revealing the shadows lurking behind the facade of celebration. He recounted how the picture marked the beginning of a series of inexplicable misfortunes that befell the group—tragedies that seemed to defy explanation and logic.



Kwame's House Hunting Dilemma: Unravelling The Secrets Of The Past

As Kwame listened, his mind raced with questions, each revelation peeling back another layer of mystery. What unseen forces had conspired against his ancestors? And how did their fate intertwine with the enigmatic house he had stumbled upon?

As the final words of his father's story hung in the air, Kwame felt a chill run down his spine. The photograph, once a mere relic of the past, now held the key to unlocking secrets that had lain dormant for decades.

With the promise of truth beckoning from the shadows, Kwame knew that his journey was far from over. The next chapter awaited, teeming with the promise of revelation and discovery. And as he embarked on this quest for answers, one thing was certain: the past held secrets that would shape his destiny in ways he could never have imagined.

Stay tuned for the next riveting installment of Kwame's journey, where the past and present collide in a whirlwind of mystery and intrigue.





Final Thoughts - Message From:

Karen Halm

Spektra Global

Karen Halm
Karen Halm
Halm

April has been a month of inspiration and innovation at Spektra Global. As we reflect on our journey thus far, I am reminded of the power of collaboration and teamwork in driving our success. From the vibrant energy of our team gatherings to the meticulous craftsmanship of our projects, each day brings new opportunities to create, collaborate, and contribute to something greater than ourselves.

As we look ahead to the months to come, let us continue to harness the power of teamwork to fuel our creativity, elevate our designs, and exceed the expectations of our clients. Together, we can build a future where excellence knows no bounds, and where every space we create becomes a testament to the power of collaboration and the beauty of collective vision.

Thank you for your unwavering dedication and commitment to Spektra's mission. Together, we will continue to push the boundaries of design, inspire one another, and leave a lasting impact on the world around us.

Warm regards,
Karen Halm
COO, Spektra Global

DREAM IT.
LIVE IT.